

TERMS OF REFERENCE (TOR)

Bid No (144/2014)

Assignment: Terms of Reference for: technical service of specialized entity to develop landscapes model for Wadi Al Badan Village, Nablus, West Bank, Palestine

Project Targeted areas: Bethlehem and Wadi Al Badhan, Nablus, West Bank, Palestine.

1 Background Information

Applied Research Institute Jerusalem (ARIJ) is a Palestinian Non-Governmental Organization, a partner of project entitled as Promoting Socio-economic Sustainable Development through Innovative Technological Actions for Mediterranean Tourism Heritage and Landscapes Protection Clusters (HELAND)". This project is implemented under ENPI CBC Mediterranean Sea Basin Program, and is financed by the European Union through the European Neighborhood and Partnership Instrument. It is a joint project between ten organizations and research centres from six countries: Palestine, Lebanon, Jordan, Spain, Cyprus and Malta. The Applied Research Institute Jerusalem (ARIJ) is the Palestinian partner of the project.

2 Qualifications

The technical service provider should have a proven record of experience in the following fields:

- Panoramic Photography.
- Route virtual tour (Similar to Street View)
- Webpage Developer
- 3D modeling and video creation
- Computer Programming

3 Roles and Responsibilities

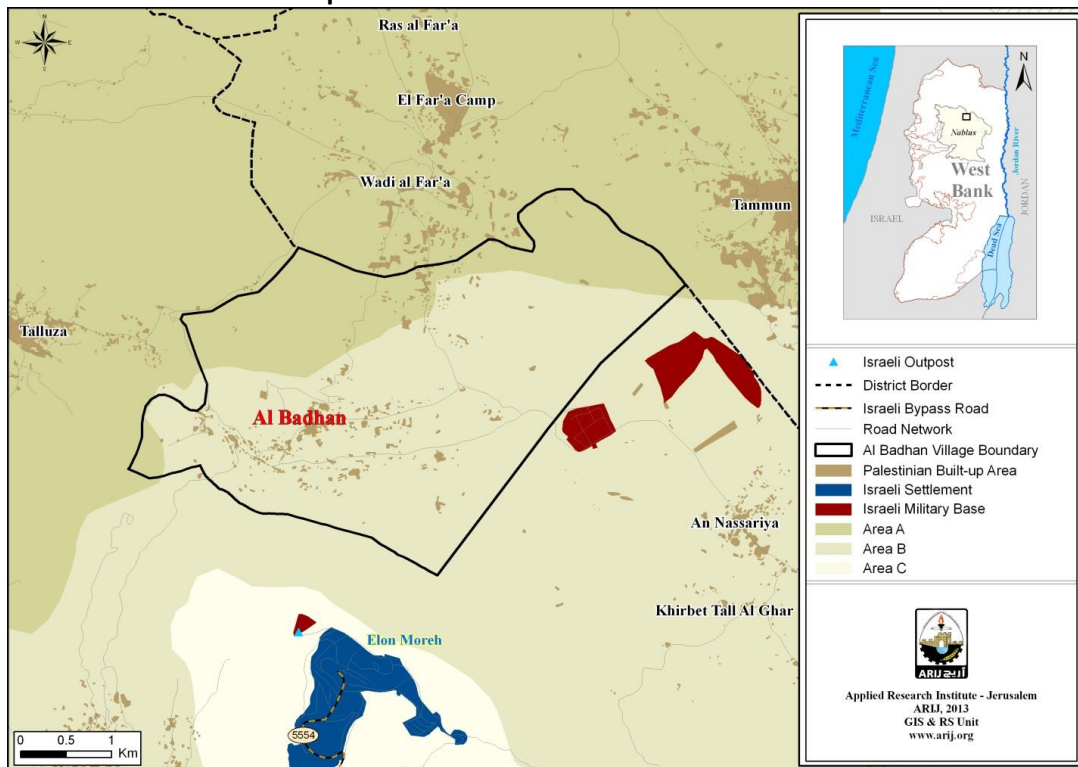
The service provider will:

- Conduct a number of field visits to Wadi Al Badhan Village to collect the necessary data.
- Plan, coordinate and consult with ARIJ team throughout the assignment period.
- Conduct a training course to ARIJ project team about the developed technologies.
- Create a webpage to upload the final products, in addition to location map and photos.
- Develop and create a virtual tour for Wadi Al Badhan hiking route through the use of panoramic photography (similar to Google Street View) to disseminate the landscapes richness in the route.
- Develop a 3D model for one ancient windmill, and publish an animation movie for the windmill in relation to history and culture.
- Conduct a detailed presentation to the main stakeholders in Wadi Al Badhan on how to use the developed technologies.

3.1 Wadi Al Badhan Locality

Al Badhan is a Palestinian village in Nablus Governorate, located 7.28 km northeast of Nablus City. It is bordered by Tammun town (tubas Governorate) to the east, Wadi al Far'a village (tubas Governorate) to the north, Talluza village to the west, and 'Azmut and An Nassariya villages to the south (map 1). Al Badhan has a total area of approximately 13,281 dunums

Map 1: Al Badhan location and borders



3.2 Hiking Route

The hiking route is Wadi Al Badhan highlights Palestine rich culture, beautiful carved landscape, diverse array of landscapes and high biodiversity. The length of the route is about 8 km (map2). The hiking time is between 2 - 3 hours.

Map 2: Wadi Al Badhan Hiking Route



3.3 Ancient Windmills:

The village has several sites of archaeological interest including 12 ancient windmills, including: Al Mahmudiya, Ash Shabiba, Ash Sheikha, Al Qaisiyat, and Al Burj, Al 'Asar, Imsallam, Al Jadida and As Sultaniyat, in addition to Khirbat Qarwa, Khirbat Al Khreiba and Khirbat as Sarb (ruins) All of these sites are in need of restoration in order to qualify as a tourist location, as determined by the Ministry of Tourism and Antiquities.

4 Deliverables

- A work plan for the time of the assignment including all tasks in coordination with the project coordinators.
- A webpage that includes the final outputs, results and products, in addition to location map and photos.
- A virtual tour for Wadi Al Badhan hiking route through the use of panoramic photography (similar to Google Street View), in addition to highlight points of interest in the village particularly the historic and touristic sites.
- A 3D model for one ancient windmill, with an animation movie for the windmill in relation to history and culture.
- A detailed presentation to the main stakeholders in Wadi Al Badhan on how to use the developed technologies (ARIJ will prepare the workshop).
- After the revision and feedback of ARIJ project team, the technical provider will submit the final product
- The technical service provider will prepare a power-point presentation to present the final products to ARIJ team focusing on the mentioned component.
- Submit final technical report including all the procedures and technicalities applied in developing the required outputs.

5 Dissemination

The main findings and products will be used only by ARIJ and HELAND project website to disseminate the landscapes richness in the study area.

6 Duration of the Assignment

Work period will commence on or about two months after signing the contract. The work timeline may be reduced or changes by ARIJ at its discretion. During this period, the technical service provider should be ready to spend time at ARIJ, working closely with HELAND ARIJ project team.

7 Logistics/Facilitation

ARIJ HELAND project team will assist the technical service provider through arranging the meetings and field visits. It is expected that the technical service provider will use his/her own office, laptop computer and software, have own phone and e-mail access. The technical service provider will also be responsible for his or her own transportation cost.

8 Evaluation Criteria

The technical service provider will be evaluated according to timeliness, responsibility, initiative, communication, and quality of the products delivered, and as the following criteria:

Technical offer evaluation 65%

Financial offer evaluation 35%

And the total percentage should not be less than 75%

9 Unsatisfactory Performance

In case of unsatisfactory performance, the contract will be terminated by a notification letter sent 5 days prior to the termination date. In the meantime, ARIJ will initiate another selection in order to identify an appropriate candidate.

Notes:

- All prices should be in **US Dollar Excluding VAT**.
- The technical service provider should be able to issue a Zero Vat Invoice (if it is a firm/authorized and registered dealer) OR Issue a payment request (for Individuals).
- The technical service provider should provide a valid deduction at source certificate.

