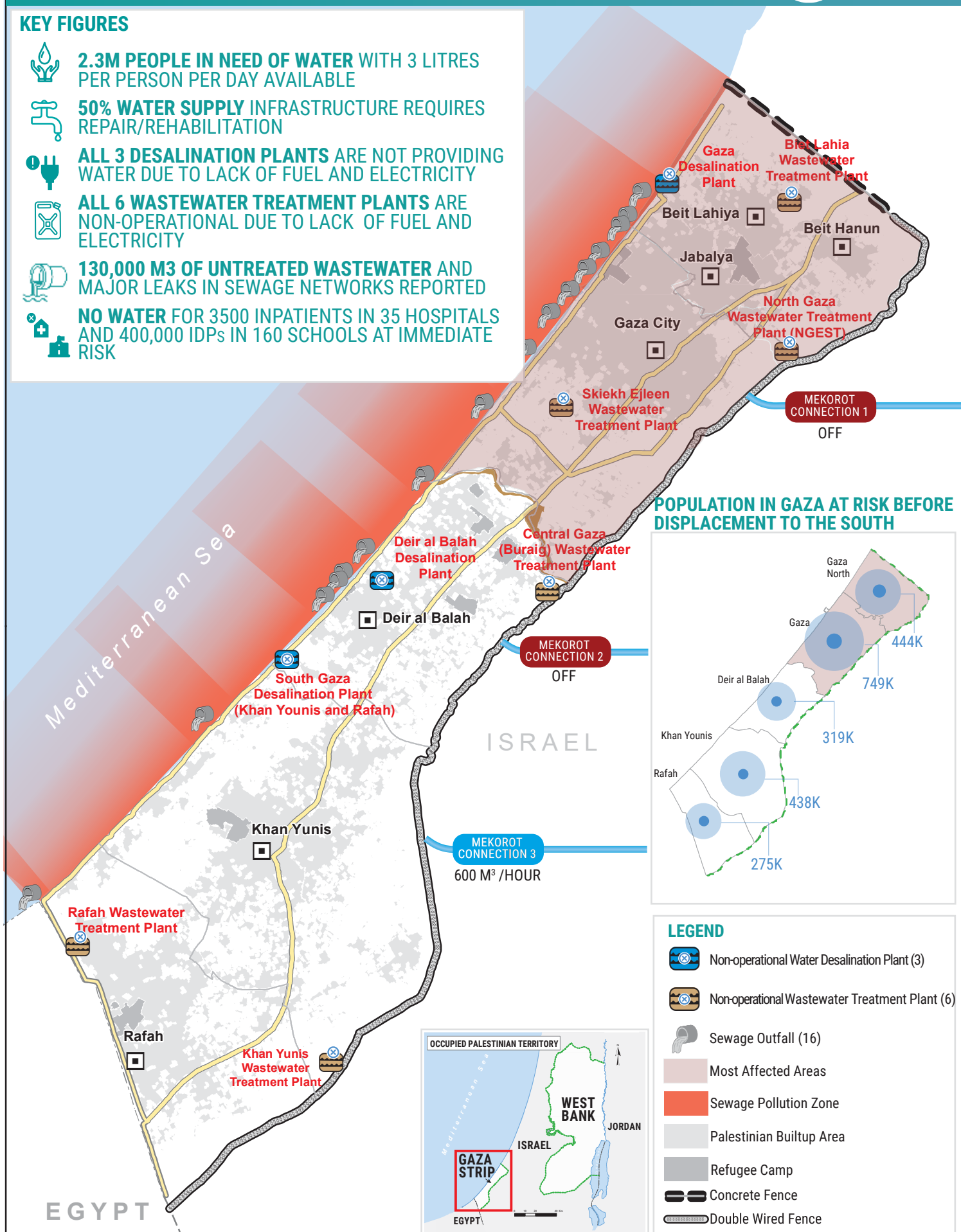


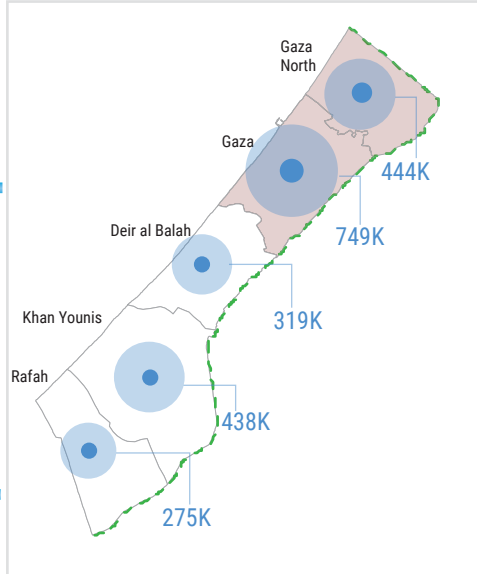


## KEY FIGURES

- 2.3M PEOPLE IN NEED OF WATER WITH 3 LITRES PER PERSON PER DAY AVAILABLE**
- 50% WATER SUPPLY INFRASTRUCTURE REQUIRES REPAIR/REHABILITATION**
- ALL 3 DESALINATION PLANTS ARE NOT PROVIDING WATER DUE TO LACK OF FUEL AND ELECTRICITY**
- ALL 6 WASTEWATER TREATMENT PLANTS ARE NON-OPERATIONAL DUE TO LACK OF FUEL AND ELECTRICITY**
- 130,000 M3 OF UNTREATED WASTEWATER AND MAJOR LEAKS IN SEWAGE NETWORKS REPORTED**
- NO WATER FOR 3500 INPATIENTS IN 35 HOSPITALS AND 400,000 IDPs IN 160 SCHOOLS AT IMMEDIATE RISK**



## POPULATION IN GAZA AT RISK BEFORE DISPLACEMENT TO THE SOUTH



## LEGEND

- Non-operational Water Desalination Plant (3)
- Non-operational Wastewater Treatment Plant (6)
- Sewage Outfall (16)
- Most Affected Areas
- Sewage Pollution Zone
- Palestinian Builtup Area
- Refugee Camp
- Concrete Fence
- Double Wired Fence



## DISCLAIMER

THE DESIGNATIONS EMPLOYED AND THE PRESENTATION OF THE MATERIAL ON THIS MAP DO NOT IMPLY THE EXPRESSION OF ANY OPINION WHATSOEVER ON THE PART OF THE SECRETARIAT OF THE UNITED NATIONS CONCERNING THE LEGAL STATUS OF ANY COUNTRY, TERRITORY, CITY OR AREA OR OF ITS AUTHORITIES, OR CONCERNING THE DELIMITATION OF ITS FRONTIERS OR BOUNDARIES.

SOURCE OF DATA: WASH CLUSTER PALESTINE - MAP SOURCE: OCHA OPT